



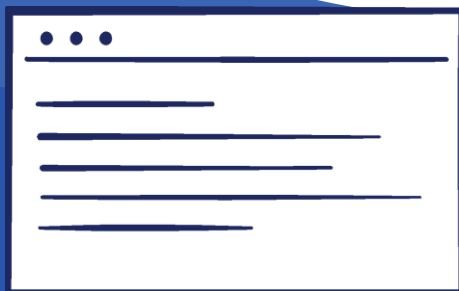
# Jumlah Penduduk WNI dan WNA

SUKU DINAS KEPENDUDUKAN DAN PENCATATAN SIPIL  
KOTA ADMINISTRASI JAKARTA PUSAT  
**DKB SEMESTER 1 TAHUN 2024 (JUNI 2024)**



**Total  
PENDUDUK WNI  
Jakarta Pusat**

**1.072.639**



**Total  
PENDUDUK WNA  
Jakarta Pusat**

**1.204**



**Total  
PENDUDUK WNI dan WNA  
Jakarta Pusat**

**1.073.843**



## JUMLAH PENDUDUK PER-KECAMATAN

KECAMATAN	JUMLAH KK			JUMLAH WNI			JUMLAH WNA			JUMLAH WNA + WNI		
	L	P	L+P	L	P	L+P	L	P	L+P	L	P	L+P
KEC. GAMBIR	24.305	8.892	33.197	46.361	46.101	92.462	53	60	113	46.414	46.161	92.575
KEC. SAWAH BESAR	31.899	12.729	44.628	60.909	61.551	122.460	131	144	275	61.040	61.695	122.735
KEC. KEMAYORAN	63.921	21.388	85.309	124.369	124.478	248.847	177	107	284	124.546	124.585	249.131
KEC. SENEN	31.719	11.492	43.211	61.154	60.058	121.212	37	25	62	61.191	60.083	121.274
KEC. CEMPAKA PUTIH	25.076	8.195	33.271	47.794	48.470	96.264	64	30	94	47.858	48.500	96.358
KEC. MENTENG	22.212	7.669	29.881	43.338	43.009	86.347	56	40	96	43.394	43.049	86.443
KEC. TANAH ABANG	43.749	15.519	59.268	84.486	83.658	168.144	190	75	265	84.676	83.733	168.409
KEC. JOHAR BARU	34.504	11.161	45.665	69.108	67.795	136.903	12	3	15	69.120	67.798	136.918
JAKARTA PUSAT	277.385	97.045	374.430	537.519	535.120	1.072.639	720	484	1.204	538.239	535.604	1.073.843

# JUMLAH PENDUDUK PER-KELURAHAN

	JUMLAH KK			JUMLAH WNI			JUMLAH WNA			JUMLAH WNA + WNI		
KELURAHAN	L	P	L+P	L	P	L+P	L	P	L+P	L	P	L+P
GAMBIR	794	297	1.091	1.414	1.403	2.817	1	1	2	1.415	1.404	2.819
CIDENG	4.523	1.816	6.339	8.456	9.006	17.462	14	17	31	8.470	9.023	17.493
PETOJO UTARA	5.236	2.023	7.259	10.147	10.199	20.346	15	15	30	10.162	10.214	20.376
PETOJO SELATAN	4.870	1.582	6.452	8.974	8.487	17.461	6	7	13	8.980	8.494	17.474
KEBON KELAPA	3.084	1.250	4.334	5.779	5.661	11.440	15	14	29	5.794	5.675	11.469
DURI PULO	5.798	1.924	7.722	11.591	11.345	22.936	2	6	8	11.593	11.351	22.944
KEC. GAMBIR	24.305	8.892	33.197	46.361	46.101	92.462	53	60	113	46.414	46.161	92.575
PASAR BARU	3.745	1.581	5.326	6.888	7.211	14.099	23	41	64	6.911	7.252	14.163
KARANG ANYAR	7.835	2.912	10.747	15.389	15.137	30.526	5	4	9	15.394	15.141	30.535
KARTINI	6.504	2.772	9.276	12.496	13.130	25.626	9	10	19	12.505	13.140	25.645
GUNUNG SAHARI UTARA	4.974	2.112	7.086	9.462	9.925	19.387	25	37	62	9.487	9.962	19.449
MANGGA DUA SELATAN	8.841	3.352	12.193	16.674	16.148	32.822	69	52	121	16.743	16.200	32.943
KEC. SAWAH BESAR	31.899	12.729	44.628	60.909	61.551	122.460	131	144	275	61.040	61.695	122.735

# JUMLAH PENDUDUK PER-KELURAHAN

	JUMLAH KK			JUMLAH WNI			JUMLAH WNA			JUMLAH WNA + WNI		
KELURAHAN	L	P	L+P	L	P	L+P	L	P	L+P	L	P	L+P
KEMAYORAN	6.408	2.150	8.558	12.227	12.170	24.397	9	5	14	12.236	12.175	24.411
KEBON KOSONG	9.472	3.495	12.967	18.411	18.609	37.020	96	65	161	18.507	18.674	37.181
HARAPAN MULIA	6.918	2.169	9.087	13.709	13.630	27.339	2	1	3	13.711	13.631	27.342
SERDANG	9.173	2.840	12.013	17.851	18.050	35.901	7	-	7	17.858	18.050	35.908
GN. SAHARI SELATAN	5.641	2.140	7.781	11.133	11.021	22.154	9	6	15	11.142	11.027	22.169
CEMPAKA BARU	10.141	3.294	13.435	19.515	19.796	39.311	6	4	10	19.521	19.800	39.321
SUMUR BATU	6.951	2.376	9.327	13.513	13.727	27.240	47	25	72	13.560	13.752	27.312
UTAN PANJANG	9.217	2.924	12.141	18.010	17.475	35.485	1	1	2	18.011	17.476	35.487
<b>KEC. KEMAYORAN</b>	<b>63.921</b>	<b>21.388</b>	<b>85.309</b>	<b>124.369</b>	<b>124.478</b>	<b>248.847</b>	<b>177</b>	<b>107</b>	<b>284</b>	<b>124.546</b>	<b>124.585</b>	<b>249.131</b>
SEZEN	2.128	723	2.851	3.976	3.852	7.828	16	15	31	3.992	3.867	7.859
KENARI	3.024	1.095	4.119	5.782	5.591	11.373	5	2	7	5.787	5.593	11.380
PASEBAN	7.323	2.729	10.052	13.991	14.060	28.051	4	2	6	13.995	14.062	28.057
KRAMAT	8.877	3.239	12.116	17.395	16.861	34.256	2	2	4	17.397	16.863	34.260
KWITANG	4.646	1.777	6.423	9.147	9.153	18.300	7	1	8	9.154	9.154	18.308
BUNGUR	5.721	1.929	7.650	10.863	10.541	21.404	3	3	6	10.866	10.544	21.410
<b>KEC. SEZEN</b>	<b>31.719</b>	<b>11.492</b>	<b>43.211</b>	<b>61.154</b>	<b>60.058</b>	<b>121.212</b>	<b>37</b>	<b>25</b>	<b>62</b>	<b>61.191</b>	<b>60.083</b>	<b>121.274</b>

# JUMLAH PENDUDUK PER-KELURAHAN

KELURAHAN	JUMLAH KK			JUMLAH WNI			JUMLAH WNA			JUMLAH WNA + WNI		
	L	P	L+P	L	P	L+P	L	P	L+P	L	P	L+P
CEMPAKA PUTIH TIMUR	7.221	2.312	9.533	13.600	14.027	27.627	25	23	48	13.625	14.050	27.675
CEMPAKA PUTIH BARAT	11.031	3.540	14.571	21.257	21.270	42.527	20	2	22	21.277	21.272	42.549
RAWASARI	6.824	2.343	9.167	12.937	13.173	26.110	19	5	24	12.956	13.178	26.134
KEC. CEMPAKA PUTIH	25.076	8.195	33.271	47.794	48.470	96.264	64	30	94	47.858	48.500	96.358
MENTENG	7.633	2.676	10.309	14.953	15.113	30.066	22	17	39	14.975	15.130	30.105
PEGANGSAAN	6.999	2.271	9.270	13.914	13.630	27.544	6	3	9	13.920	13.633	27.553
CIKINI	2.571	996	3.567	4.927	4.838	9.765	9	3	12	4.936	4.841	9.777
GONDANGDIA	1.132	451	1.583	2.154	2.410	4.564	14	16	30	2.168	2.426	4.594
KEBON SIRIH	3.877	1.275	5.152	7.390	7.018	14.408	5	1	6	7.395	7.019	14.414
KEC. MENTENG	22.212	7.669	29.881	43.338	43.009	86.347	56	40	96	43.394	43.049	86.443

# JUMLAH PENDUDUK PER-KELURAHAN

	JUMLAH KK			JUMLAH WNI			JUMLAH WNA			JUMLAH WNA + WNI		
KELURAHAN	L	P	L+P	L	P	L+P	L	P	L+P	L	P	L+P
GELORA	962	336	1.298	1.784	1.853	3.637	12	8	20	1.796	1.861	3.657
BENDUNGAN HILIR	6.518	2.603	9.121	12.221	12.545	24.766	20	10	30	12.241	12.555	24.796
KARET TENGSIN	6.147	2.090	8.237	11.709	11.573	23.282	61	18	79	11.770	11.591	23.361
PETAMBURAN	10.364	3.315	13.679	20.330	19.589	39.919	24	14	38	20.354	19.603	39.957
KEBON MELATI	10.101	3.391	13.492	19.372	18.918	38.290	51	17	68	19.423	18.935	38.358
KEBON KACANG	6.479	2.533	9.012	12.737	12.758	25.495	21	5	26	12.758	12.763	25.521
KAMPUNG BALI	3.178	1.251	4.429	6.333	6.422	12.755	1	3	4	6.334	6.425	12.759
KEC. TANAH ABANG	43.749	15.519	59.268	84.486	83.658	168.144	190	75	265	84.676	83.733	168.409
JOHAR BARU	10.958	3.703	14.661	21.694	21.988	43.682	5	-	5	21.699	21.988	43.687
KAMPUNG RAWA	6.505	1.890	8.395	13.063	12.719	25.782	2	1	3	13.065	12.720	25.785
GALUR	5.506	1.596	7.102	11.084	10.469	21.553	-	1	1	11.084	10.470	21.554
TANAH TINGGI	11.535	3.972	15.507	23.267	22.619	45.886	5	1	6	23.272	22.620	45.892
KEC. JOHAR BARU	34.504	11.161	45.665	69.108	67.795	136.903	12	3	15	69.120	67.798	136.918
KOTA JAKARTA PUSAT	277.385	97.045	374.430	537.519	535.120	1.072.639	720	484	1.204	538.239	535.604	1.073.843

# KONDISI UMUM WILAYAH JAKARTA PUSAT

## Semester 1 (Juni 2024)

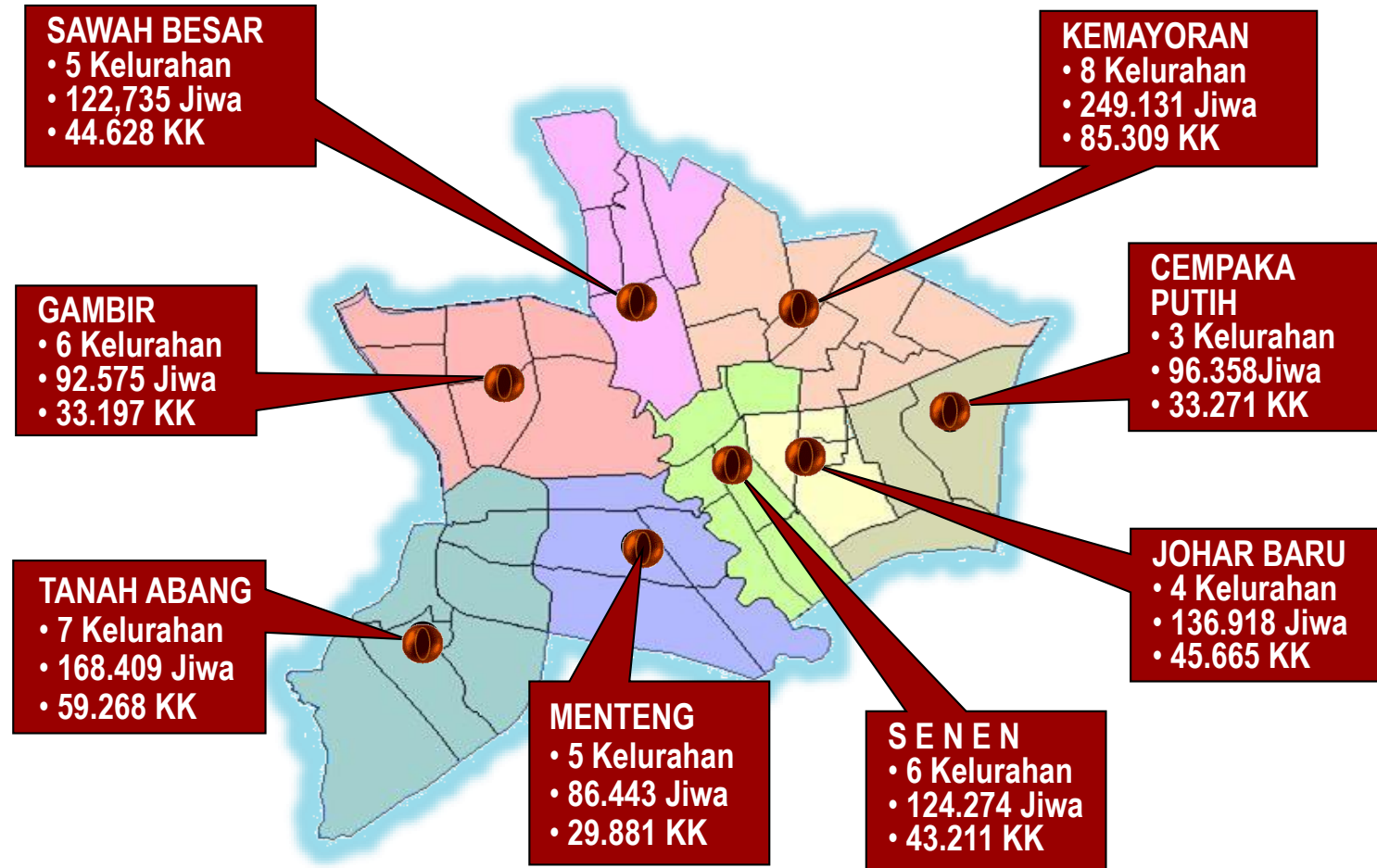
**LUAS 47,93 KM<sup>2</sup>**  
**TERDIRI DARI :**

- 8 KEC.
- 44 KEL.
- 407 RW.
- 4.745 RT.

**KEPADATAN**  
**25.313 Jiwa/KM<sup>2</sup>**

**TERPADAT :**  
**Kel. Tanah Tinggi**  
**45.892 Jiwa**

**TERJARANG :**  
**Kel. Gambir**  
**2.819 Jiwa**



*\*Berdasarkan Data Konsolidasi Bersih (DKB) Juni 2024*